

Rainier GABLE ROOF

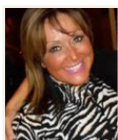


TOTAL LIVING SIZE: 2,575 - 3,008 sf.
2,575 without Bonus / 3,008 sf. with Bonus
BEDS: 3 Including Master & Jr. Master Suites
BATHS: 4

Grand Entrance Foyer, Vaulted Ceilings, Granite & Hardwood Throughout, Professional Grade Kitchen, Master Suite with Generous Ensuite, Covered Veranda, Indoor & Outdoor Fireplaces, Stone Accents, 3-Car Oversized Finished Garage.



Photos & renderings are for illustrative purposes only. Builder reserves the right to make modifications and changes to prices, floorplans, interior/exterior design, materials and specifications at any time without prior notice and/or obligation.



Barb Williams
 Real Estate Professional
 Direct. 253.318.5110
 barbyourlandlinc@gmail.com



Levi Gannon Garrett
 Loan Officer
 NMLS# 226966
 Direct. 360.280.3924
 Email. levi.garrett@fairwaymc.com

