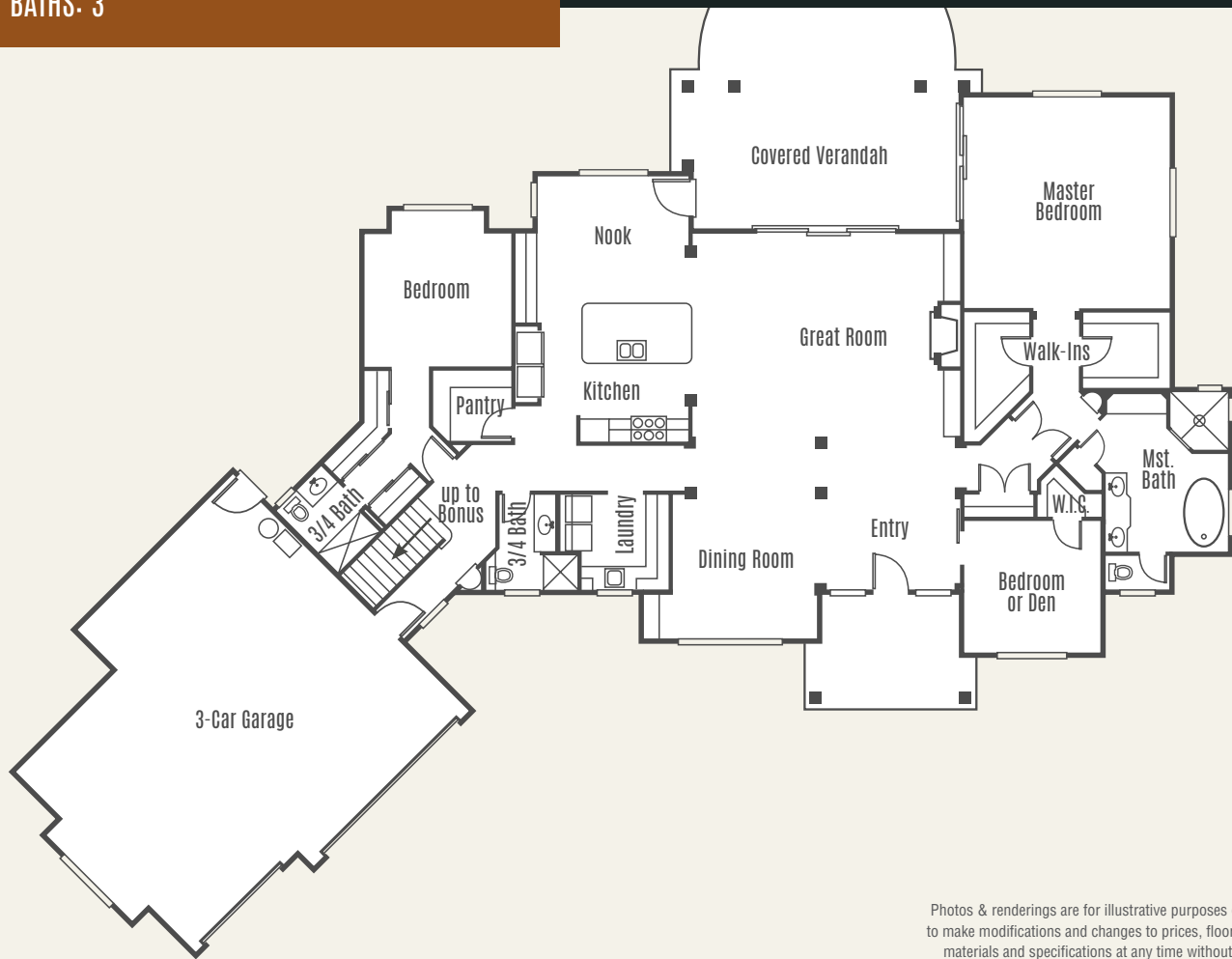


# Cascade HIP ROOF

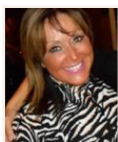


**TOTAL LIVING SIZE: 2,850- 3,146 sf.**  
**2,850 without Bonus / 3,146 sf. with Bonus**  
**BEDS: 3 Including Master & Jr. Master Suites**  
**BATHS: 3**

Grand Entrance Foyer, Vaulted Ceilings, Granite & Hardwood Throughout, Professional Grade Kitchen, Master Suite with Generous Ensuite, Covered Veranda, Indoor & Outdoor Fireplaces, Stone Accents, 3-Car Oversized Finished Garage.



Photos & renderings are for illustrative purposes only. Builder reserves the right to make modifications and changes to prices, floorplans, interior/exterior design, materials and specifications at any time without prior notice and/or obligation.



**Barb Williams**  
 Real Estate Professional  
 Direct. 253.318.5110  
 barbyourlandlinc@gmail.com



**Levi Gannon Garrett**  
 Loan Officer  
 NMLS# 226966  
 Direct. 360.280.3924  
 Email. levi.garrett@fairwaymc.com

